



MMC-AP*7HP-E**

Ceiling Type

Comfortable ambience

- Top-class quietness
- New design reduces sound level to half that of conventional units.

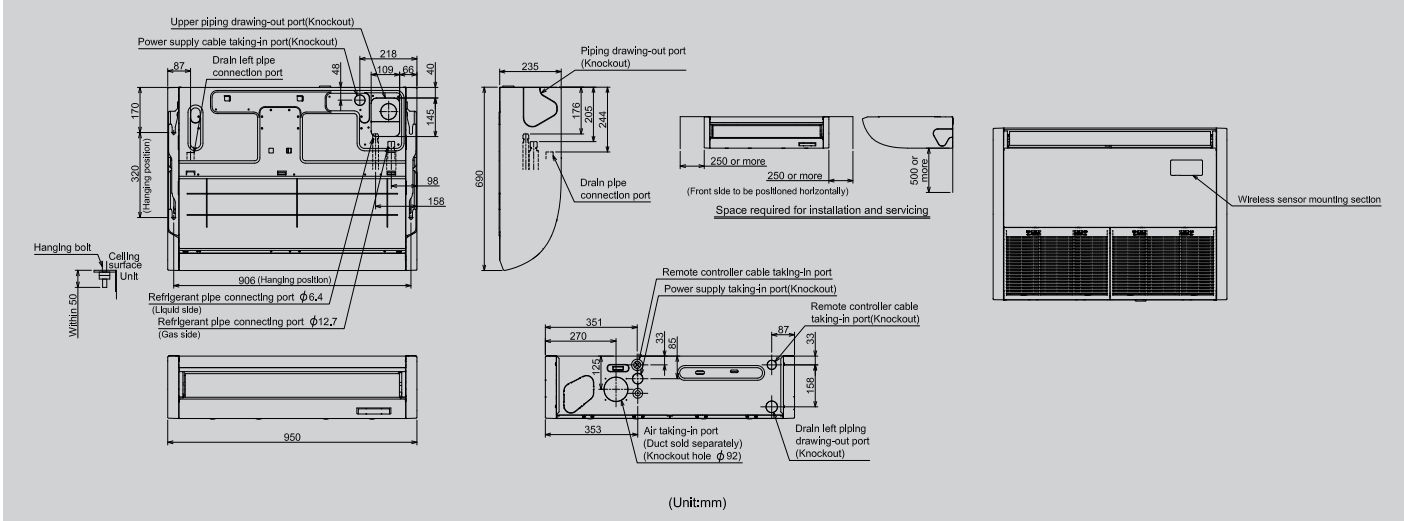
Flap control

- The airflow angle is automatically set to the most suitable setting according to your cooling or heating needs, and an automatic swing mode enables airflow to reach all areas of the room to create a comfortable ambience.

Installation efficiency

The unit can be suspended from the ceiling simply by adjusting two screws on the intake grille, avoiding complex procedures which can involve up to a dozen installation screws.

MMC-AP0157HP-E, AP0187HP-E

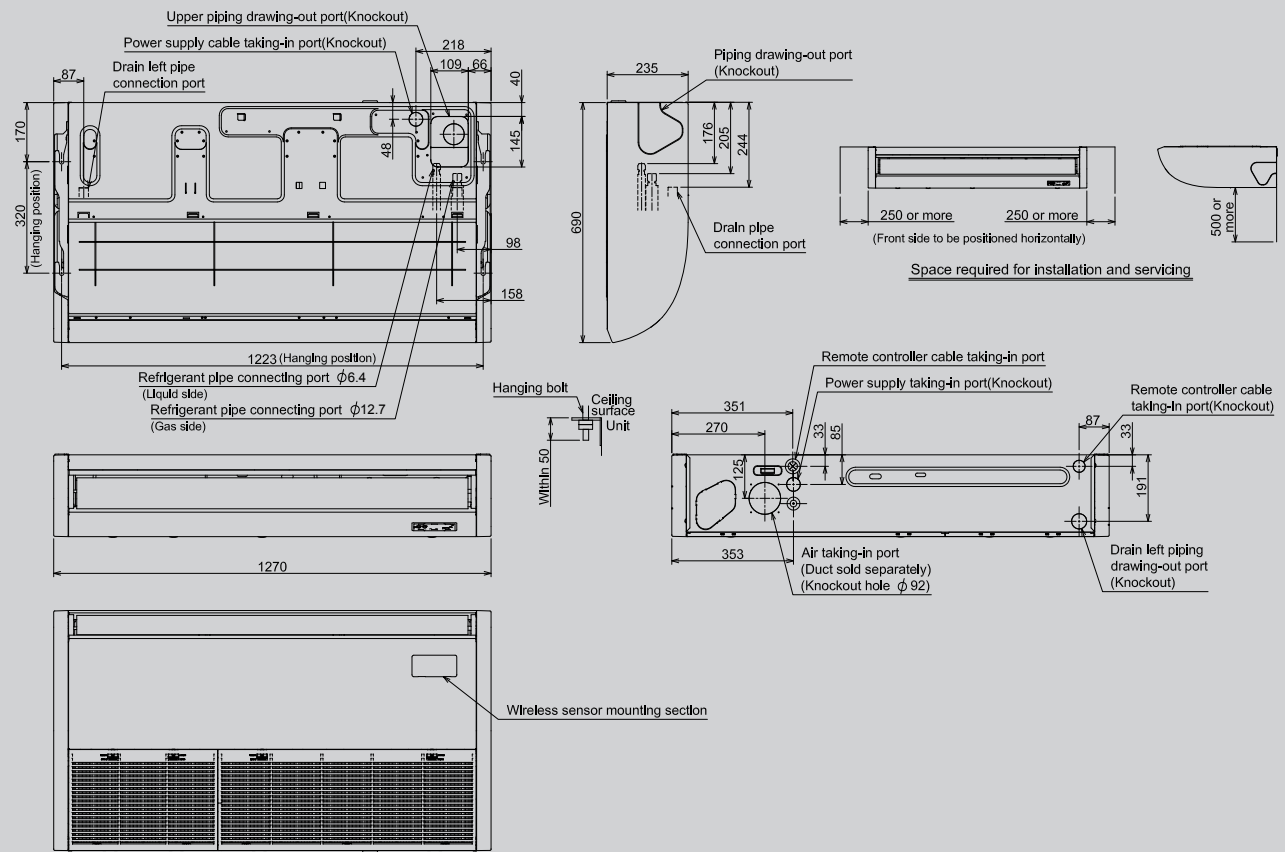


Technical specifications

Model name	MMC-	AP0157HP-E	AP0187HP-E	AP0247HP-E	AP0277HP-E	AP0367HP-E	AP0487HP-E	AP0567HP-E
Cooling/Heating capacity*1	(kW)	4.5/5.0	5.6/6.3	7.1/8.0	8.0/9.0	11.2/12.5	14.0/16.0	16.0/18.0
Electrical characteristics	Power requirements	1-phase 50Hz 230V (220-240V) / 1-phase 60Hz 220V (Separate power supply for indoor units required.)						
	Power consumption 50 Hz/60 Hz (kW)	0.033	0.034		0.067		0.083	0.111
External dimensions	Height (mm)	235						
	Width (mm)	950			1,270		1,586	
	Depth (mm)	690						
Total weight (kg)		24			30		37	
Fan unit	Standard air flow (High/Mid/Low) (m ³ /h)	840/690/540	960/720/540	1440/1020/750		1860/1350/1020	1860/1530/1200	2040/1650/1260
	Motor output (W)	94						
Connecting pipe	Gas side (mm)	ø12.7			ø15.9			
	Liquid side (mm)	ø6.4			ø9.5			
	Drain port (nominal dia.)	20 (Polyvinyl chloride tube)						
Sound pressure level*2 (High/Mid/Low) (dB(A))		36/34/28	37/35/28	41/36/29		44/38/32	44/41/35	46/42/36

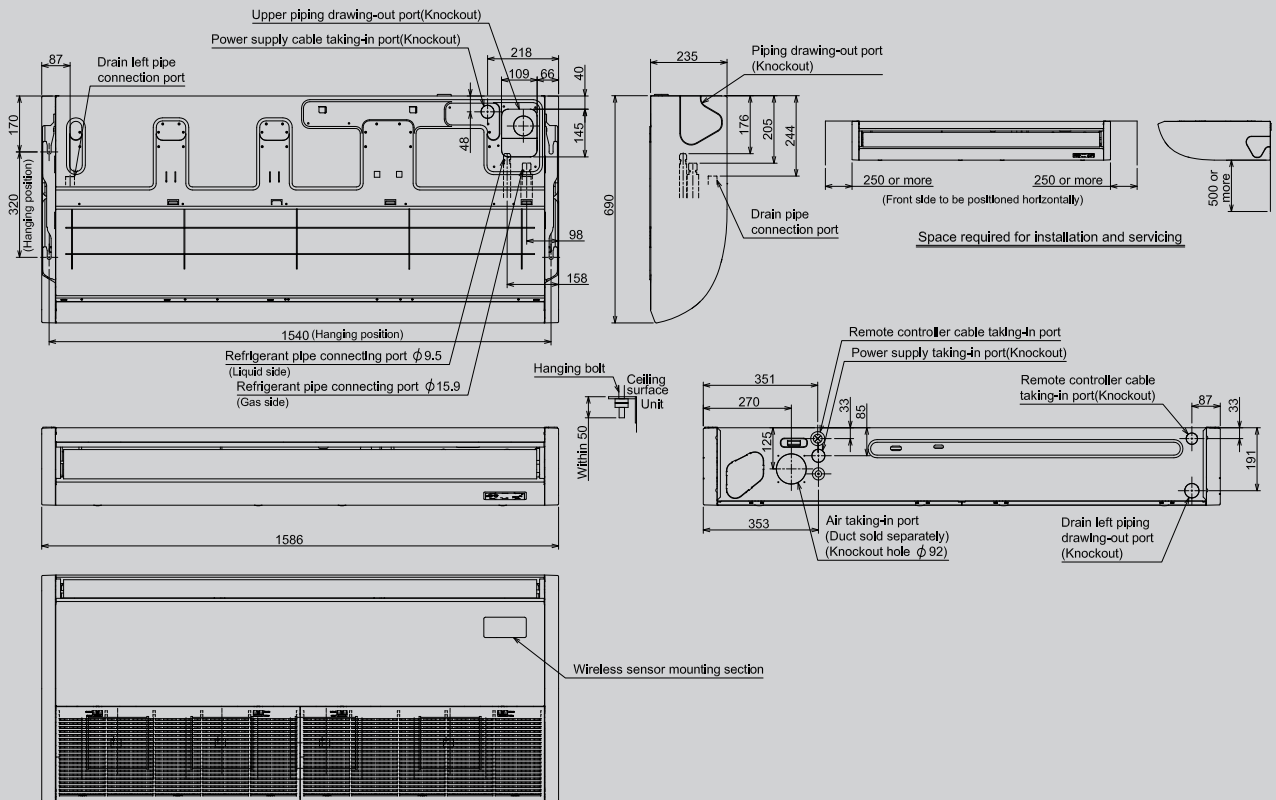
*1 This reference piping consists of 5 m of main piping and 2.5 m of branch piping connected at the same height level.
 *2 The actual values in an external operating environment are generally higher than the indicated values due to the contribution from ambient noise.

MMC-AP0247HP-E, AP0277HP-E



(Unit:mm)

MMC-AP0367HP-E, AP0487HP-E, AP0567HP-E



(Unit:mm)